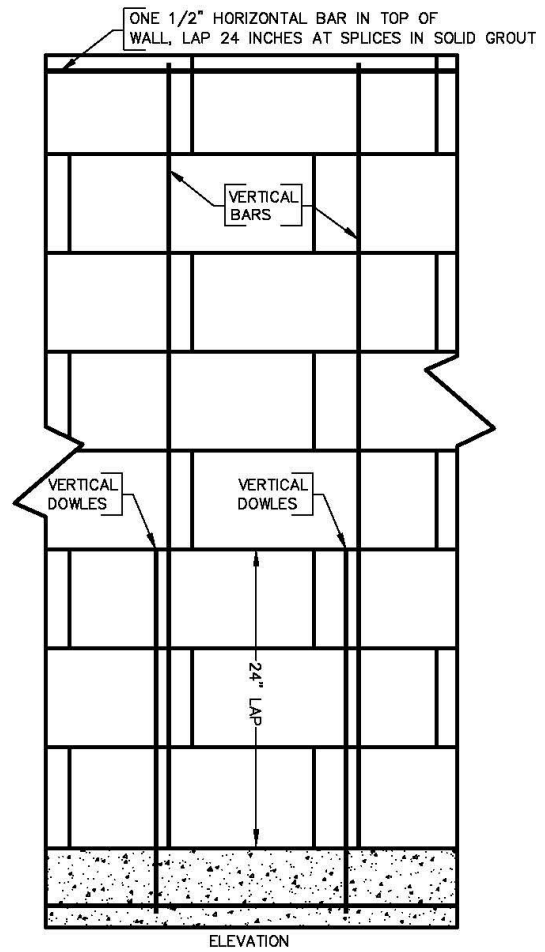
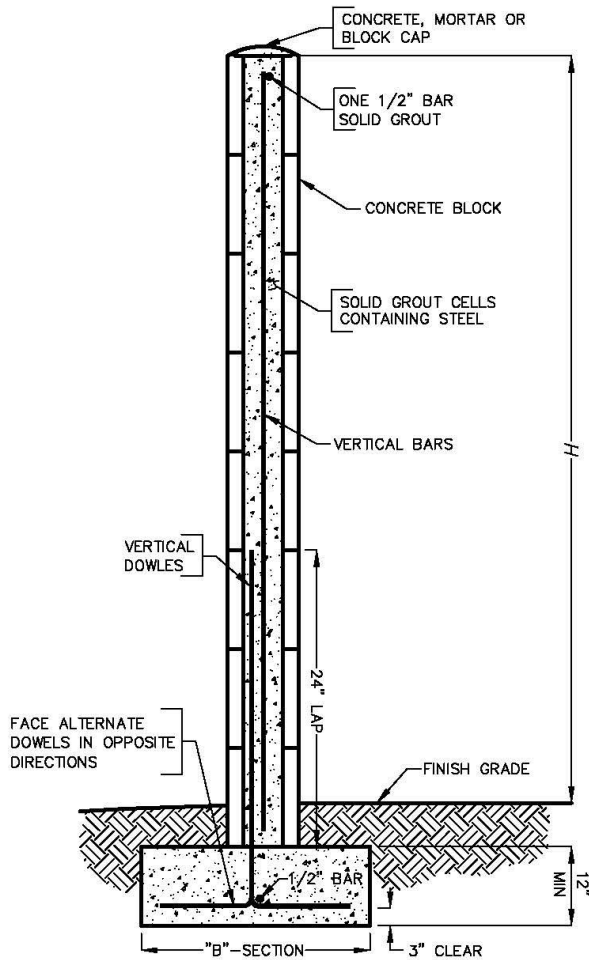




City of Hesperia  
**BUILDING AND SAFETY DIVISION**

**Garden Wall (Non-Retaining)  
 "T" Type Footing**



H	B	VERTICAL REINFORCING
6'-0"	24 INCHES	1/2 INCH AT 32 INCHES ON CENTER
5'-0"	20 INCHES	1/2 INCH AT 32 INCHES ON CENTER
4'-0"	16 INCHES	3/8 INCH AT 48 INCHES ON CENTER
3'-0"	12 INCHES	3/8 INCH AT 48 INCHES ON CENTER

**NOTES:**

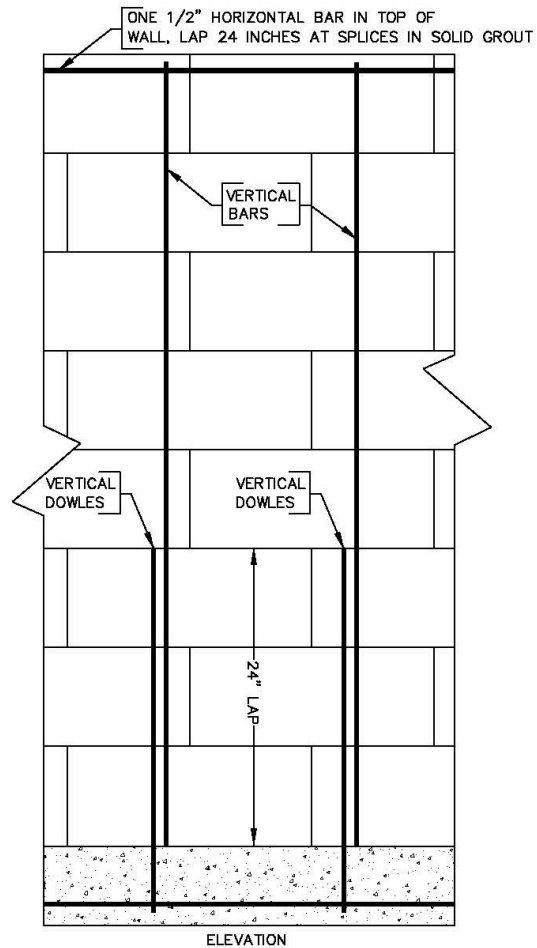
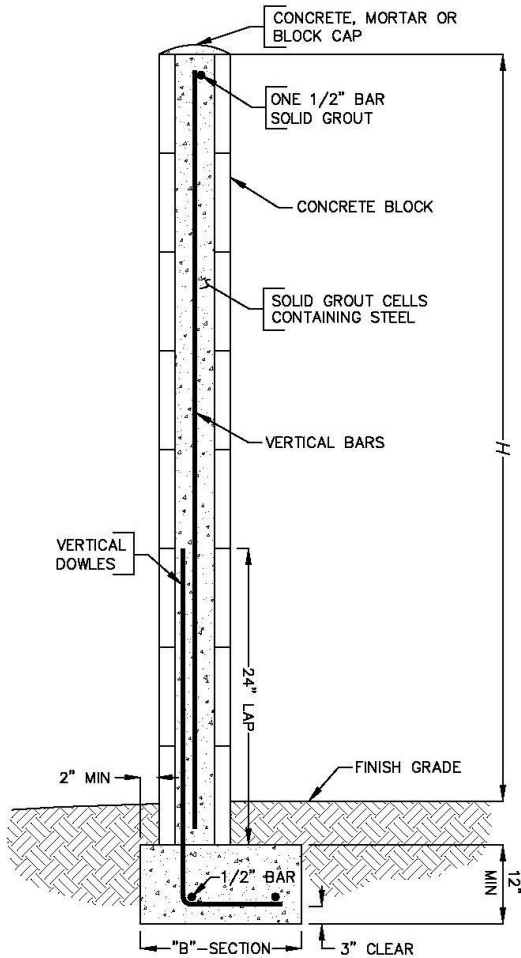
1. THE MAXIMUM ALLOWABLE HEIGHT IS 6'-0". CHECK WITH THE BUILDING DEPARTMENT FOR OTHER HEIGHT RESTRICTIONS IN BUILDING SETBACK.
2. SOLID GROUT CELLS CONTAINING STEEL.
3. CELLS REQUIRED TO BE GROUTED ARE TO BE IN VERTICAL ALIGNMENT AND FREE FROM OBSTRUCTIONS. LAY BLOCK IN 1/2 BOND.
4. FOOTINGS TO BE DUG 12" MINIMUM INTO UNDISTURBED SOIL.
5. FOOTINGS WHERE THE SURFACE OF THE GROUND SLOPES MORE THAN 1 FOOT IN 10 FEET SHALL BE LEVEL OR SHALL BE STEPPED SO THAT BOTH TOP AND BOTTOM OF SUCH FOOTINGS ARE LEVEL.
6. REQUEST INSPECTIONS AT LEAST ONE BUSINESS DAY PRIOR TO DAY INSPECTION IS NEEDED.
7. REQUEST INSPECTION AND OBTAIN APPROVAL FOR FOOTINGS AND FOOTING STEEL PRIOR TO PLACING CONCRETE.
8. REQUEST INSPECTION AND OBTAIN APPROVAL FOR STEEL IN WALL PRIOR TO GROUTING. OBTAIN FINAL INSPECTION AND APPROVAL.

**NOTICE:**  
 ALL PORTIONS OF WALL AND FOOTINGS MUST BE INSIDE THE PROPERTY LINES. (UNLESS THERE IS A NOTARIZED WRITTEN AGREEMENT FROM THE ADJOINING PROPERTY OWNERS)

**BUILDING & SAFETY  
 DIVISION**

# Garden Wall (Non-Retaining) Cantilever Type Footing

(For use on property lines)



## NOTES:

1. THE MAXIMUM ALLOWABLE HEIGHT IS 6'-0". CHECK WITH THE BUILDING DEPARTMENT FOR OTHER HEIGHT RESTRICTIONS IN BUILDING SETBACK.
2. SOLID GROUT CELLS CONTAINING STEEL.
3. CELLS REQUIRED TO BE GROUTED ARE TO BE IN VERTICAL ALIGNMENT AND FREE FROM OBSTRUCTIONS. LAY BLOCK IN 1/2 BOND.
4. FOOTINGS TO BE DUG 12" MINIMUM INTO UNDISTURBED SOIL.
5. FOOTINGS WHERE THE SURFACE OF THE GROUND SLOPES MORE THAN 1 FOOT IN 10 FEET SHALL BE LEVEL OR SHALL BE STEPPED SO THAT BOTH TOP AND BOTTOM OF SUCH FOOTINGS ARE LEVEL.
6. REQUEST INSPECTIONS AT LEAST ONE BUSINESS DAY PRIOR TO DAY INSPECTION IS NEEDED.
7. REQUEST INSPECTION AND OBTAIN APPROVAL FOR FOOTINGS AND FOOTING STEEL PRIOR TO PLACING CONCRETE
8. REQUEST INSPECTION AND OBTAIN APPROVAL FOR STEEL IN WALL PRIOR TO GROUTING. OBTAIN FINAL INSPECTION AND APPROVAL.

H	B	VERTICAL REINFORCING
6'-0"	24 INCHES	1/2 INCH AT 32 INCHES ON CENTER
5'-0"	20 INCHES	1/2 INCH AT 32 INCHES ON CENTER
4'-0"	16 INCHES	3/8 INCH AT 48 INCHES ON CENTER
3'-0"	12 INCHES	3/8 INCH AT 48 INCHES ON CENTER

## NOTICE:

ALL PORTIONS OF WALL AND FOOTINGS  
MUST BE INSIDE THE PROPERTY LINES.  
(UNLESS THERE IS A NOTARIZED WRITTEN  
AGREEMENT FROM THE ADJOINING  
PROPERTY OWNERS)

BUILDING & SAFETY  
DIVISION